

WARRANTY INFORMATION

TERMS OF THE WARRANTY:

All products manufactured by Happijac Co. are warranted to the retail customer for one year from date of purchase against defects in material or workmanship. Any defective part(s) will be repaired or replaced (at Happijac's option) without charge, when returned transportation prepaid.

There are no other expressed warranties except as set forth above and any implied warranties are limited in duration to that of the expressed warranty. This warranty does not cover any damage due to misuse, negligence, or accidents. There is no warranty covering consequential damages, incidental damages, or incidental expenses including damage to property.

This warranty gives you specific legal rights. You may have other rights which may vary from state to state.

WARRANTY CLAIMS:

All defective material must be returned to the factory via prepaid shipment. Upon inspection and determination of claims warranted, the factory will repair/replace the material at no charge and return the repaired/replaced material to the customer with delivery charges prepaid by Happijac via common carrier of Happijac's choosing. Upgrades and changes to shipping mode resulting in additional shipping costs shall be at customers expense.



HAPPIJAC company

505 N. Kays Drive, Kaysville UT 84037

Phone: (801) 544-2585

Fax: (801) 546-5241

Email: happijac@happijac.com

Web Address: www.happijac.com



Model: CA-DRL

1994 - 2002 Dodge Ram
(Except 2002 Ram 1500)

1987 - 1996 Dodge Dakota

INSTALLATION INSTRUCTIONS

READ THIS BEFORE BEGINNING INSTALLATION: This tiedown set is an alternative to the Happijac Frame Mount tiedowns on smaller, lighter campers (under 9 foot) and standard cab Dodge trucks (not recommended on extended or crew cabs). There is no stock stabilizer bar which will fit this tiedown set. If you feel one is needed, the SB-200 can be re-drilled to fit. However, you should consider using our FM-UT9 or FT-UT9 Frame Mount and SB-010 Stabilizer bar for greater strength and stability.

DODGE RAM FRONT ANCHOR INSTALLATION

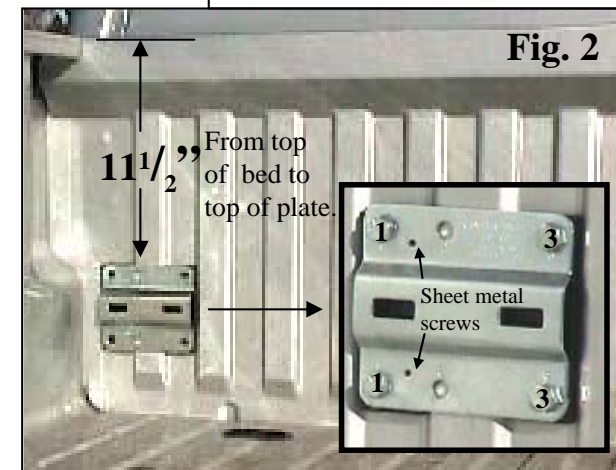
1. Prepare the silver Guide Plates for installation by applying the black plastic spacers as shown in Fig.1. Use the adhesive strips provided by peeling the white backing, placing the sticky strip on the spacer, then peeling the brown backing and pressing the spacer to the Guide Plate; Carefully aligning the holes in the spacer with the holes in the Guide Plate (opposite printed side).

Fig. 1



2. Position the silver Guide Plates such that the top of the plate is 11¹/₂ inches down from the top of the bed rail with hole pairs "1" to the outside and the spacers seated in the flutes as shown in Fig 2. Set Guide Plate parallel to the bed floor and secure in place with masking or duct tape.

Fig. 2

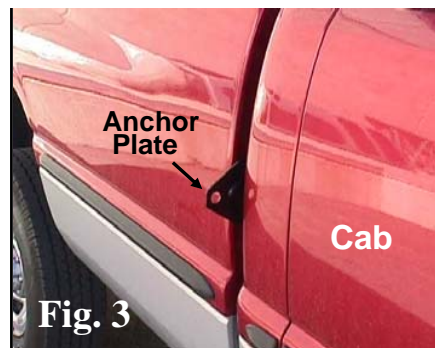


3. Drill ¹/₁₆" pilot holes in bed front wall through the two small holes in Guide Plate. Insert and tighten the ³/₄" sheet metal screws provided to secure Guide Plate to bed, then remove the tape.

4. Once both Guide Plates are attached to the bed with the small sheet metal screws, use the Guide Plates as drill guides and drill ⁷/₁₆" holes through the bed front wall in hole pairs marked 1 & 3. (See Fig. 2)

Caution, do not allow drill bit to strike cab. Place a board or some other barrier between bed and cab while drilling.

5. Slip the black Anchor Plates between the bed & cab (Fig. 3) and start all four 1" X 3/8" bolts through Guide Plate and bed, into threaded holes in Black Anchor Plate. **Important:** Start all four but do not tighten. (*Hint: These will start much easier if you run the bolts through the plate prior to installation to clear the paint from the threads.*)



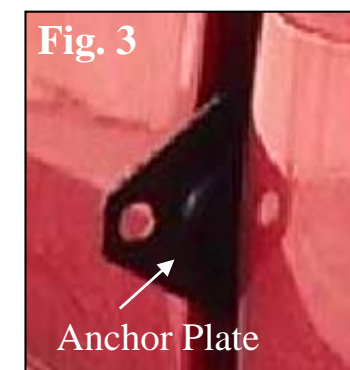
6. Remove the sheetmetal screws installed earlier then tighten all four mounting bolts.

IMPORTANT NOTE: This plate will roughly follow the contour of the bed front. Since this is a "universal" plate, designed to fit a range of trucks, it will not follow the contour perfectly, however, all parts will draw together when tightened down.

4. Place black Anchor Plate between bed & cab and just start all four 3/8" hex bolts through Guide Plate and bed, into threaded Anchor Plate. **DO NOT TIGHTEN.**

HINT: Starting bolts into Black Plate prior to installation to remove excess paint makes installation easier.

5. Once all four bolts are started, remove sheetmetal screws inserted earlier, then tighten bolts just until all parts are snugged tightly together.

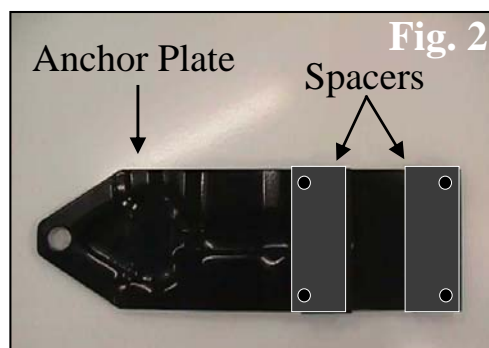
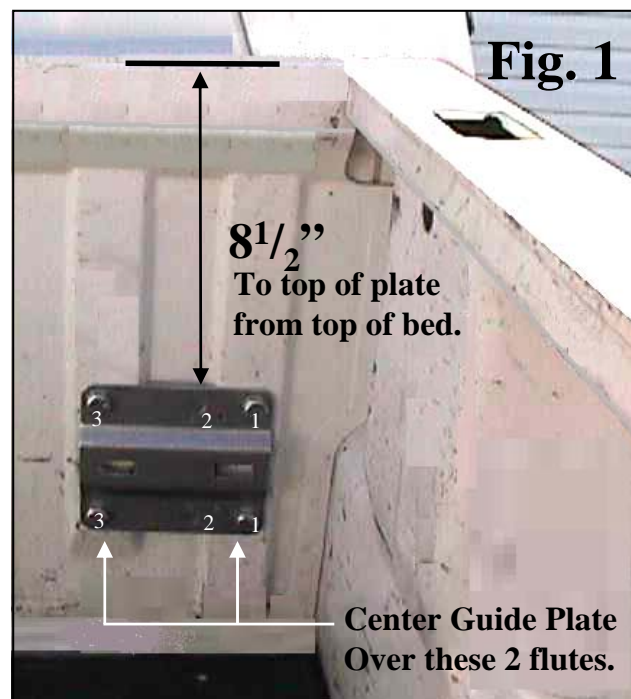


DODGE DAKOTA FRONT ANCHOR INSTALLATION

1. Locate the silver guide plate such that the top of the plate is 8 1/2" down from the top of the bed and the Guide Plate is centered horizontally over the first 2 flutes. (See figure 1) Secure the Guide Plate in this position with masking or duct tape, then by drilling 1/16" pilot through small holes in Guide Plate and bed front wall, and inserting sheetmetal screws provided.

2. Remove tape. Using the Guide Plate as a drill guide, drill 7/16" holes through hole pairs marked "1" & "3" on Guide Plate. (**Caution: Do not hit cab with bit. Put a board or some other barrier between bed and cab.**)

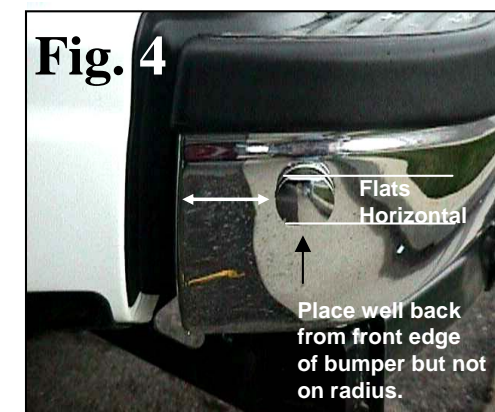
3. Using the adhesive strips provided, attach the black plastic spacers to the black Anchor Plates as shown in Fig.2.



NOTE: Rear anchors are installed in the end of the bumper. When properly installed, the bumper mount tiedowns provide excellent performance and a clean attractive appearance. There is no precise mounting location since a variety of bumpers may be installed. The general guidelines are as follows:

1. Mounting location should be as flat & vertical as possible.
2. Be sure no moldings or bumper caps interfere with the removable coupler.
3. **Warning: Mounting near the front edge of bumper could result in bumper twist and poor performance.** Choose a location as far back as possible on the flat end of the bumper. Don't go into the radius.
4. Check back side of selected mounting location to ensure adequate access for tightening the nut, then center punch and drill a 1/8" pilot hole. Enlarge to 1/2" and install Anchor Bolt with 2" fender washer, lock washer & nut.

Flat edges of Anchor Bolt must be horizontal for proper operation. Be sure to remove slide on coupler when unloading camper to avoid losing them.



REAR ANCHOR INSTALLATION