



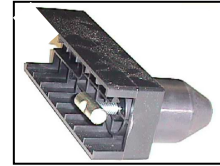
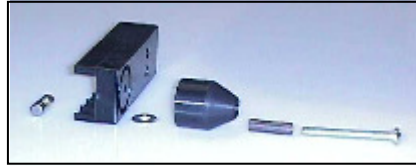
HAPPIJAC

FM-GL9 Centering Guide Locks

Note: These Centering Guide Locks are one part of a complete tiedown system. Before these parts can be installed, One of the "FM" series tiedown sets must first be installed.

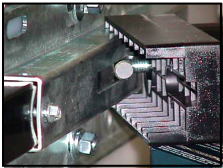
STEP 1 – [Hardware Kit E]

Assemble the Front Centering Guide Lock & bumper assembly by inserting the long stove bolt into the metal sleeve and cone,



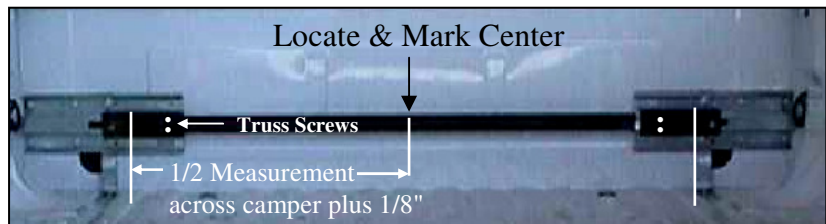
through the flat washer & bumper then turn special bar nut onto bolt flush with end of bolt.

STEP 2 – Slip special bar nut into slot in guide plate with the cone toward the outside of the bed then seat the bumper against the guide plate. (do not tighten at this time). Do the same for the other side.



STEP 3 – Measure the width of the front of the camper at the height at which it will rest against the bumper just installed and record this measurement.

STEP 4 – Locate and mark the center of the front anchor Assembly.



Set the bumper and centering guide lock such that the inner edge of the cone/roller is 1/2 the distance measured across the front of the camper plus 1/8" measuring from the center mark you made on the stabilizer bar, then tighten the bolt in the center of the cone. As you do, the bar nut will turn and lock down against the inside of the tube. Recheck positioning to be very sure that the guides are on center and spaced a total of 1/4" wider than camper, then drill 3/16" pilot hole at the truss screw locations and install the 1" long truss screws in the bumper.